



EDTECH ASSOCIATES SDN BERHAD

(18855-H)

ANALYTICAL CHEMISTS

123-L, Macalister Road, P.O. Box 163, 10720 Penang, Malaysia.
Tel: 04 - 2295986 Fax: 04 - 2289410 E - mail: chemist@edtechlab.com

Lab. Report No. QE 9154

26 September 2013

LABORATORY REPORT

Tested for: X Gene Resources,
1012, Jalan Chain Ferry,
Kimsar Garden, 13700 Prai,
Pulau Pinang.

Description of sample: One (1) sample described as:

“ *Eurycoma longifolia* Oil ”

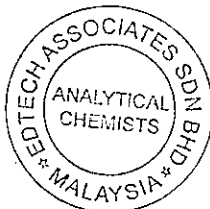
Date received: 17 September 2013

RESULTS OF ANALYSIS:

The sample described as “ *Eurycoma longifolia* Oil ” was tested for the presence of alcohol and pork.

The results of the analysis showed that the above sample was free from alcohol and animal fat including lard, indicating that it was also free from any source of porcine origin.

Norhayati Ahmad
MSc (USM), AMIC, AFMSA
(ANALYTICAL CHEMIST)



This report refers to the tested sample/s only, cannot be reproduced except in full with the approval of the laboratory and is issued without prejudice to any question of rights and/or liabilities on parties interested or concerned.



EDTECH ASSOCIATES SDN BERHAD

(18855-H)

ANALYTICAL CHEMISTS

123-L, Macalister Road, P.O. Box 163, 10720 Penang, Malaysia.
Tel: 04 - 2295986 Fax: 04 - 2289410 E-mail: chemist@edtechlab.com

Lab. Report No. QE 9525

19 December 2013

LABORATORY REPORT

Tested for : X Gene Resources
No 1012, Jalan Chain Ferry,
Kimsar Garden, 13700 Prai, Penang

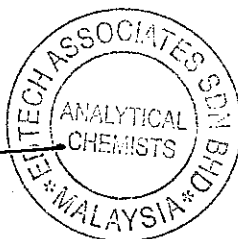
Description of sample : One(1) sample described as :
" Eurycoma Longifolia Oil
(Tongkat Ali Oil) "

Date received : 11 December 2013

RESULTS OF ANALYSIS*

Moisture and volatile matter @ 125 °C	..	0.21 %
Melting Point	..	22 °C
Specific Gravity @ 25/25 °C	..	0.9149
Refractive Index @ 25 °C	..	1.4662
Refractive Index @ 40 °C	..	1.4609
Arsenic (As)	..	Less than 0.1 mg/kg
Cadmium (Cd)	..	Less than 0.1 mg/kg
Lead (Pb)	..	Less than 0.1 mg/kg
Mercury (Hg)	..	Less than 0.01 mg/kg
pH value	..	6.7

Yeoh Guan Aun, PJK
B Sc, C Sci, C Chem, MRSC
AMIC, PMIFT, FMSA, FMOSTA
(ANALYTICAL CHEMIST)



This report refers to the tested sample/s only, cannot be reproduced except in full with the approval of the laboratory and is issued without prejudice to any question of rights and/or liabilities on parties interested or concerned.